

## K. Land Transfer Planning Area

### 1. General Description

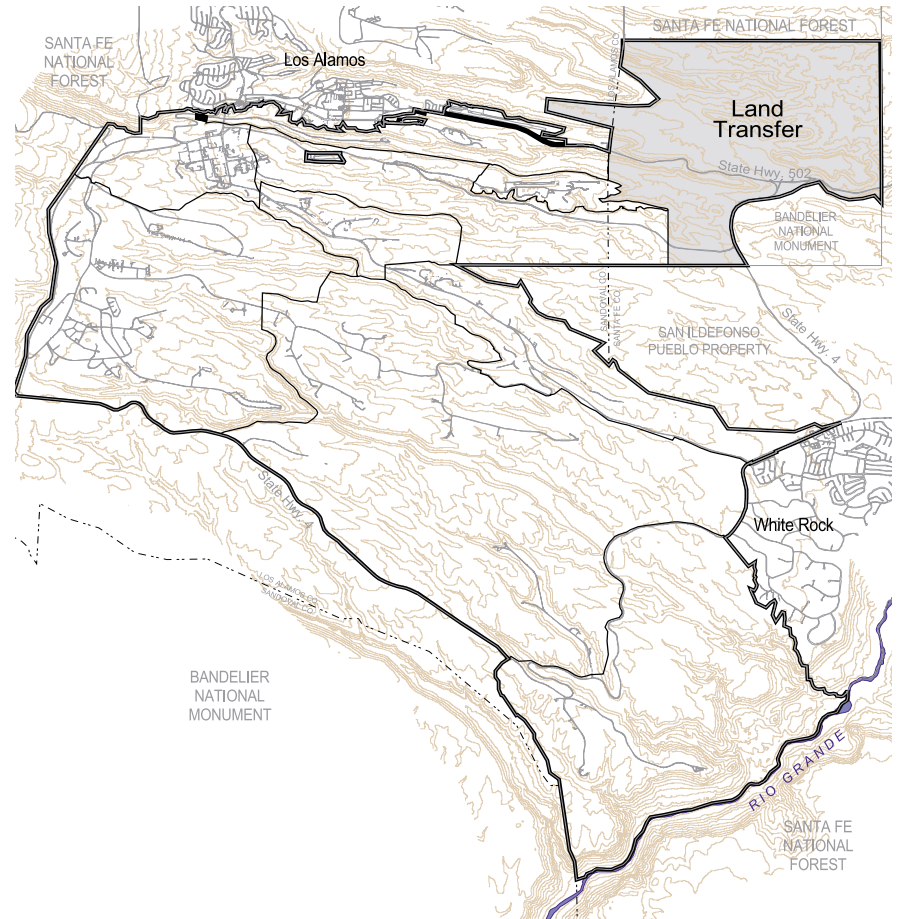
The Land Transfer Planning Area comprises 5.7 square miles and corresponds with the TA-72 and -74 boundaries. It is not considered a planning area as it is included with various DOE land parcels for transfer to one or more adjacent political entities. Most of the area is geographically remote from the main body of the Laboratory site.

The Land Transfer Planning Area contains:

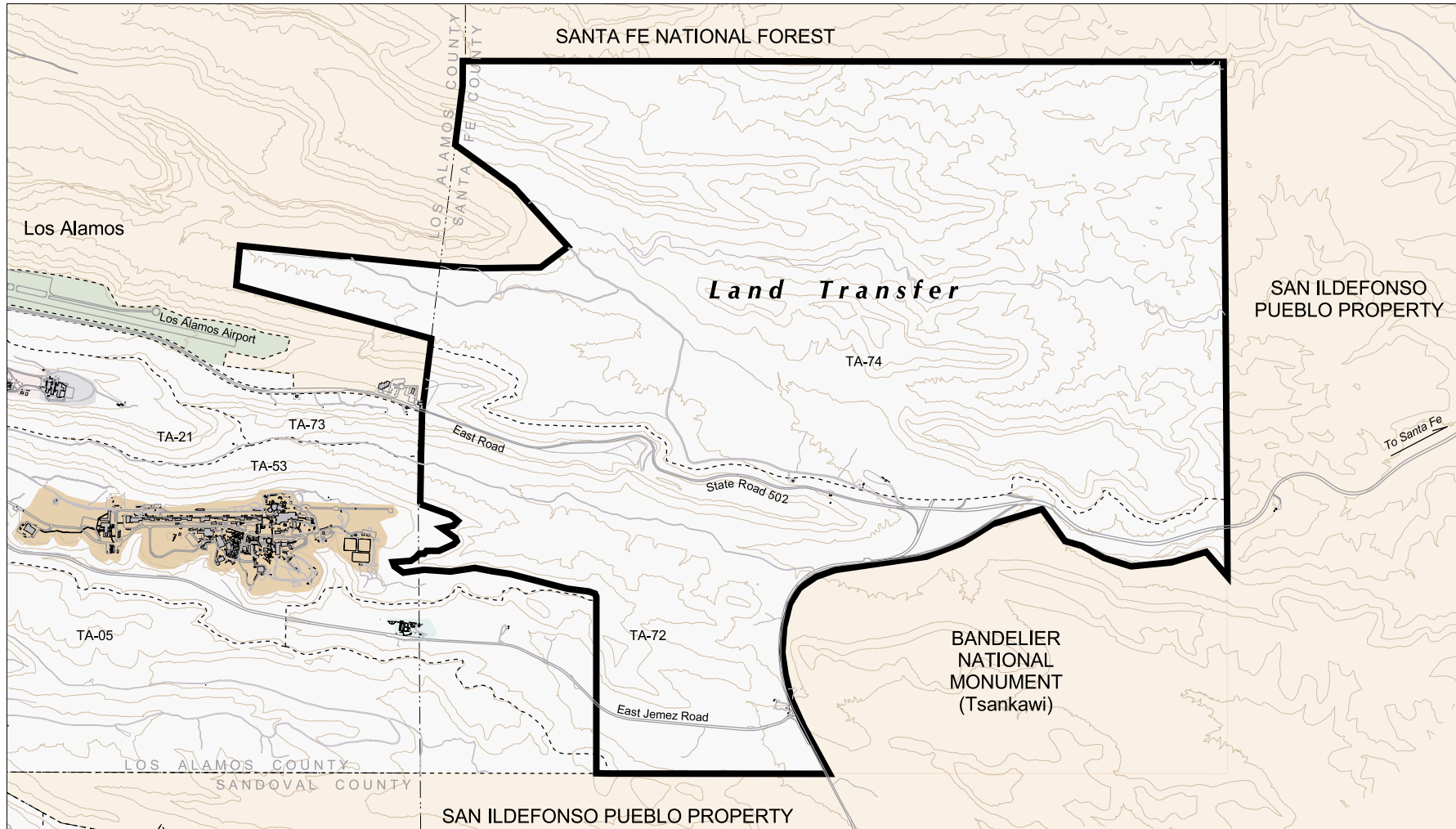
TA-72:

TA-74:

Map IV-K1: Land Transfer Key Map



Map IV-K3: Land Transfer Existing Land Use



LEGEND

LANL Buildings	Experimental Science	Reserve
Non Dept. of Energy Property	High Explosive R&D	Theoretical/Computational Science
Planning Area	High Explosive Testing	Waste Management
Research Park	Nuclear Materials R&D	
Administration	Physical/Technical Support	
Airfield	Public/Corporate Interface	



## ***2. Transportation/Circulation***

### ***a. Existing Transportation/Circulation/Parking***

The transportation system in the Land Transfer Planning Area consists of only a few Access/Service Roads and Emergency Lanes.

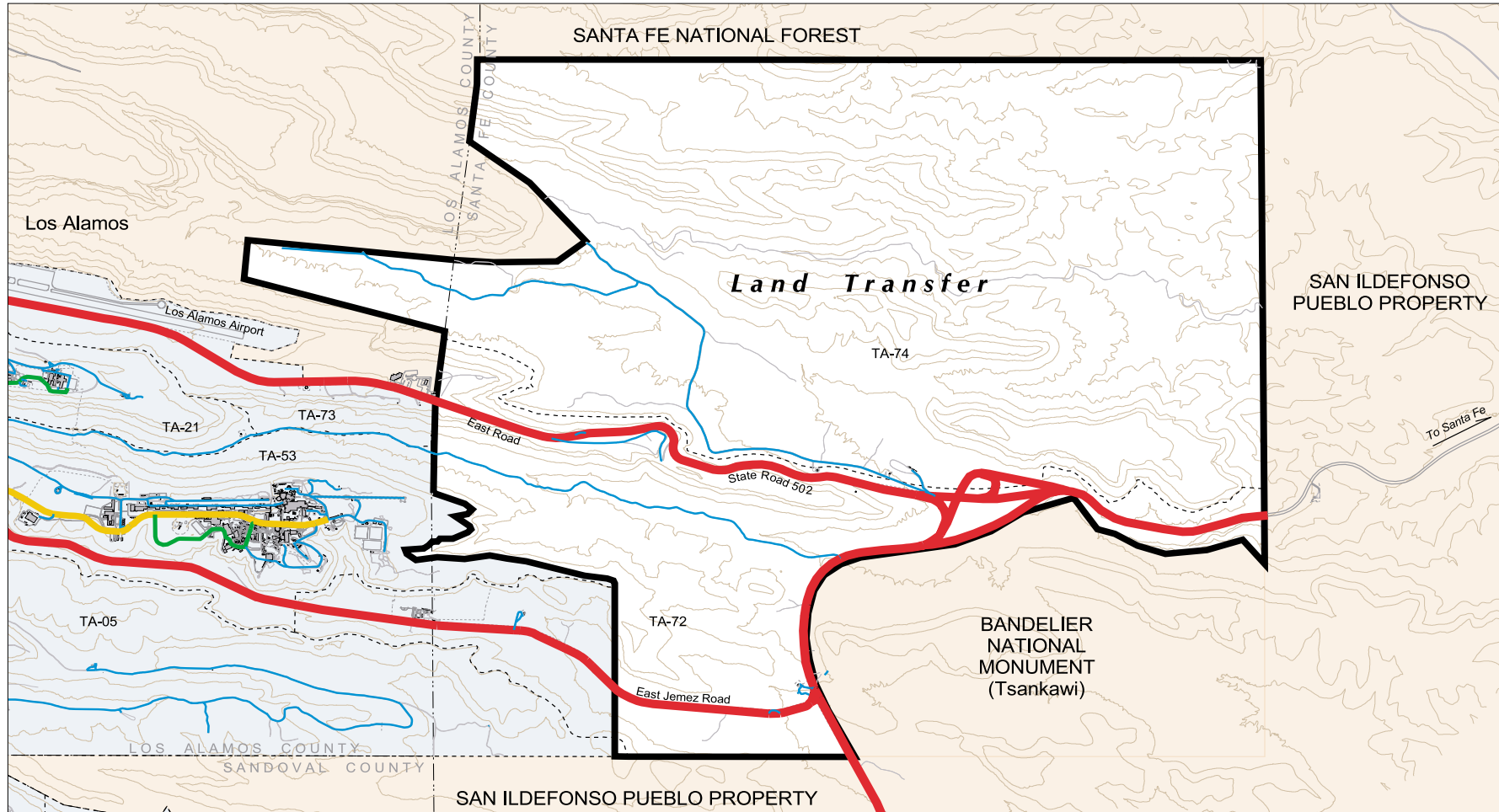
### ***b. Future Transportation/Circulation/Parking***

Future transportation related issues are not a part of DOE decision making or budgetary considerations.










## ***3. Security***

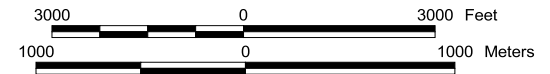
The Laboratory may transfer TA-72, parts of TA-73, and TA-74 pending further negotiation. In the meantime, the land is designated as a security buffer. The Laboratory has no plans for additional development in this area until land transfer issues have been settled.

Map IV-K4: Land Transfer Existing & Future Transportation



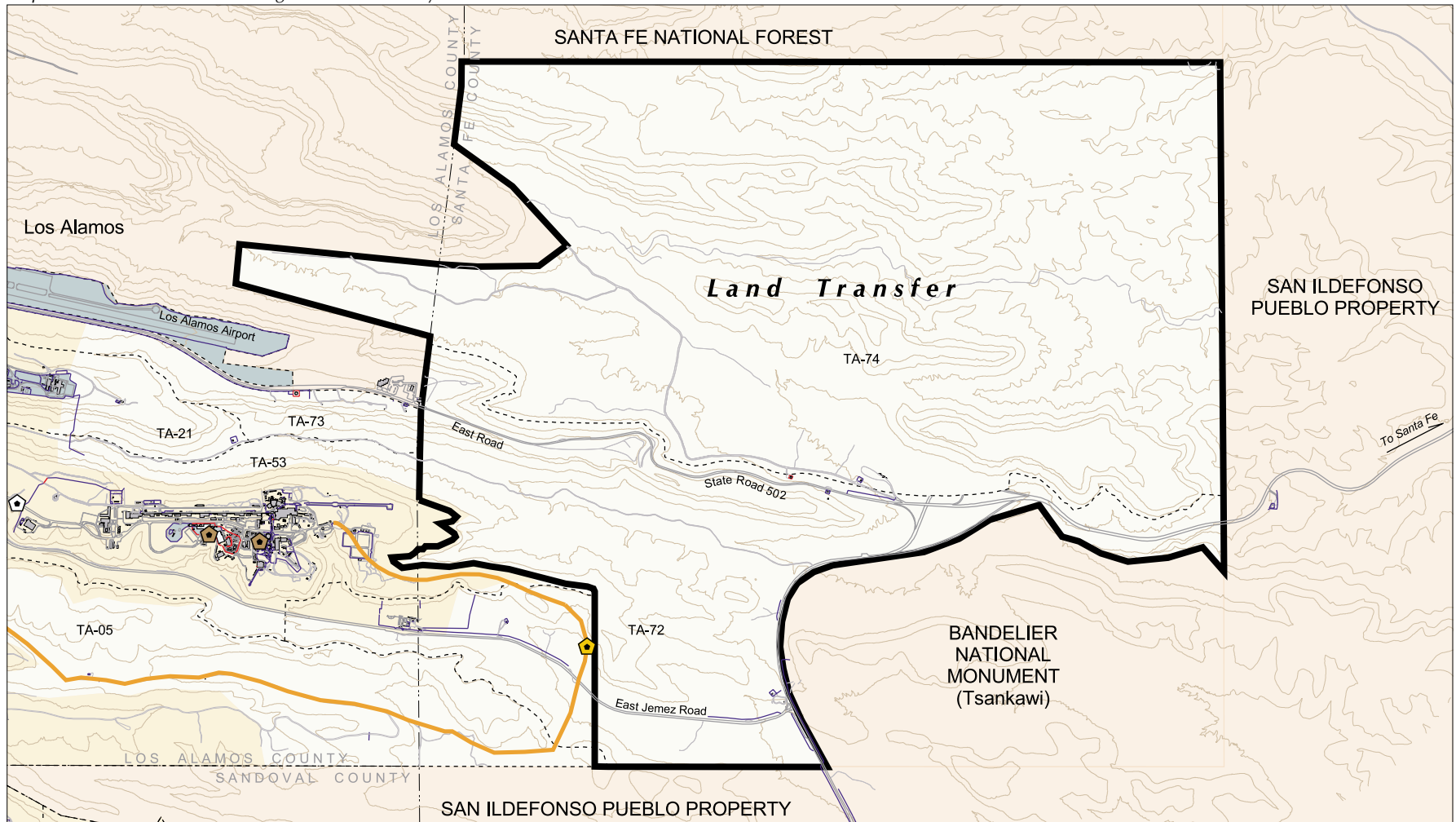
LEGEND

- |                                                                                                      |                                                                                                                  |
|------------------------------------------------------------------------------------------------------|------------------------------------------------------------------------------------------------------------------|
|  Arterial         |  Dept. of Energy Property     |
|  Collector        |  LANL Buildings               |
|  Local            |  Non Dept. of Energy Property |
|  Access / Service |  Planning Area                |
|  Emergency Lanes  |                                                                                                                  |



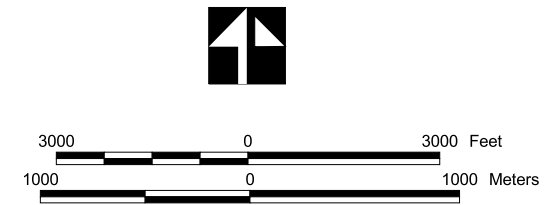


Map IV-K5: Land Transfer Existing & Future Security



LEGEND

- |                              |                         |                                   |
|------------------------------|-------------------------|-----------------------------------|
| Industrial Fences            | Proposed Guard Stations | Secured Building                  |
| Security Fences              | Active Guard Station    | Existing Limited Security Area    |
| Proposed/Improve Roads       | Closed Guard Station    | Existing Property Protection Area |
| Roads                        | Planning Area           | Existing Protected Area           |
| Technical Area Boundaries    | Research Park           | Future Limited Security Area      |
| Non Dept. of Energy Property |                         | Future Protected Area             |
|                              |                         | Security Buffer                   |



#### **4. Utilities**

Water, sanitary sewer, and natural gas systems are in good condition. No major repair or materials replacement is required in this planning area. At this time, water, sewer and gas capacities satisfy current demand. The steam system is not present in the Land Transfer Planning Area.

There is one remaining transformer in area 2 that is PCB contaminated. This transformer should either be replaced or refilled with a suitable dielectric fluid to mitigate the PCB concerns.

##### **a. Water System**

No issues have been identified.

##### **b. Sanitary Sewer System**

No issues have been identified.

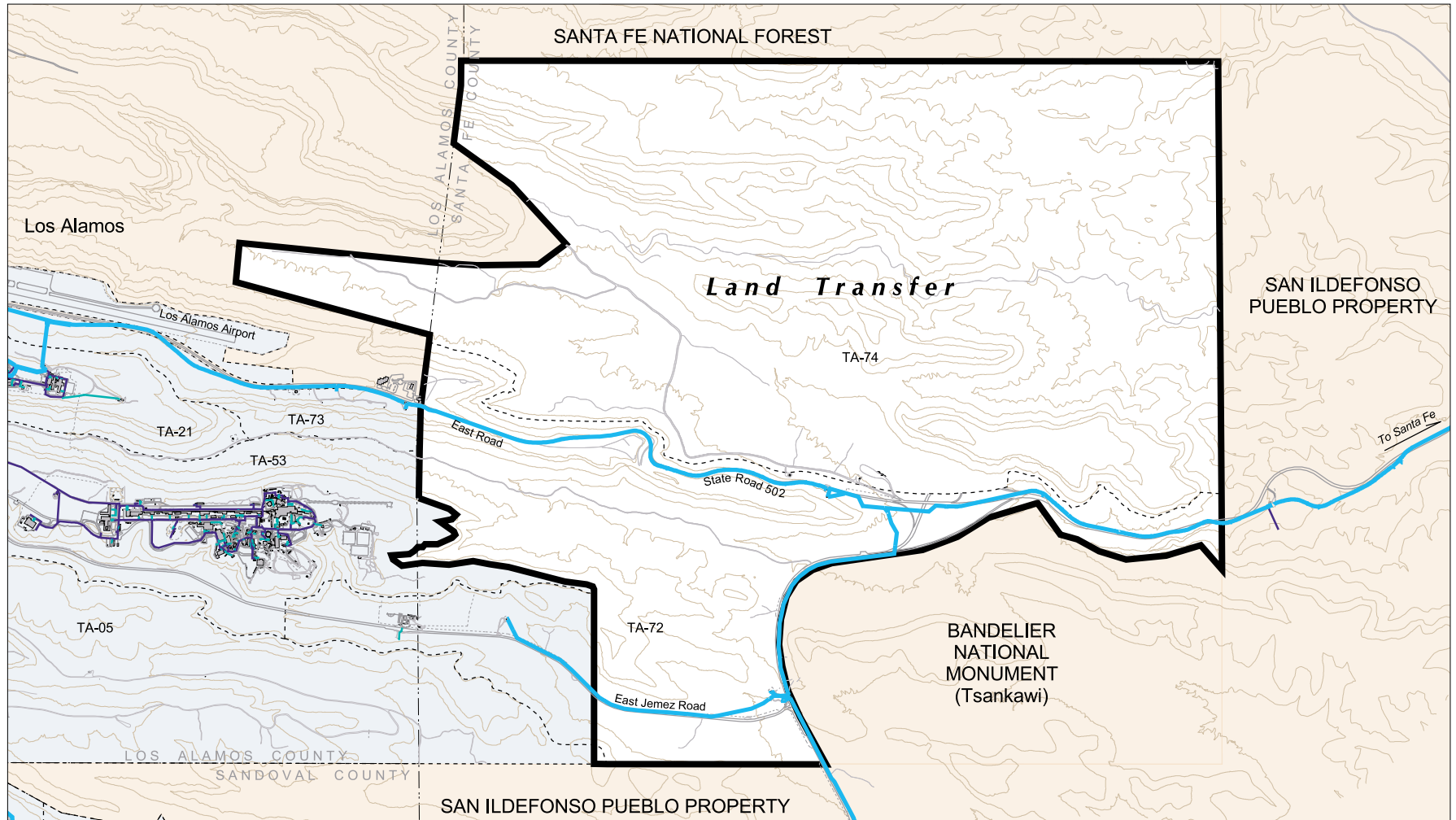
##### **c. Natural Gas System**

No issues have been identified.

##### **d. Electric Transmission and Distribution System**

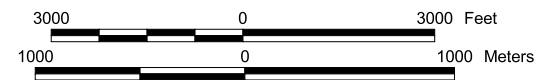
There is one remaining transformer in this area that is PCB contaminated. This transformer should either be replaced or refilled with a suitable dielectric fluid to mitigate the PCB concerns. There are no recommendations for this area as it will be transferred from DOE ownership.

Map IV-K6: Land Transfer Water System

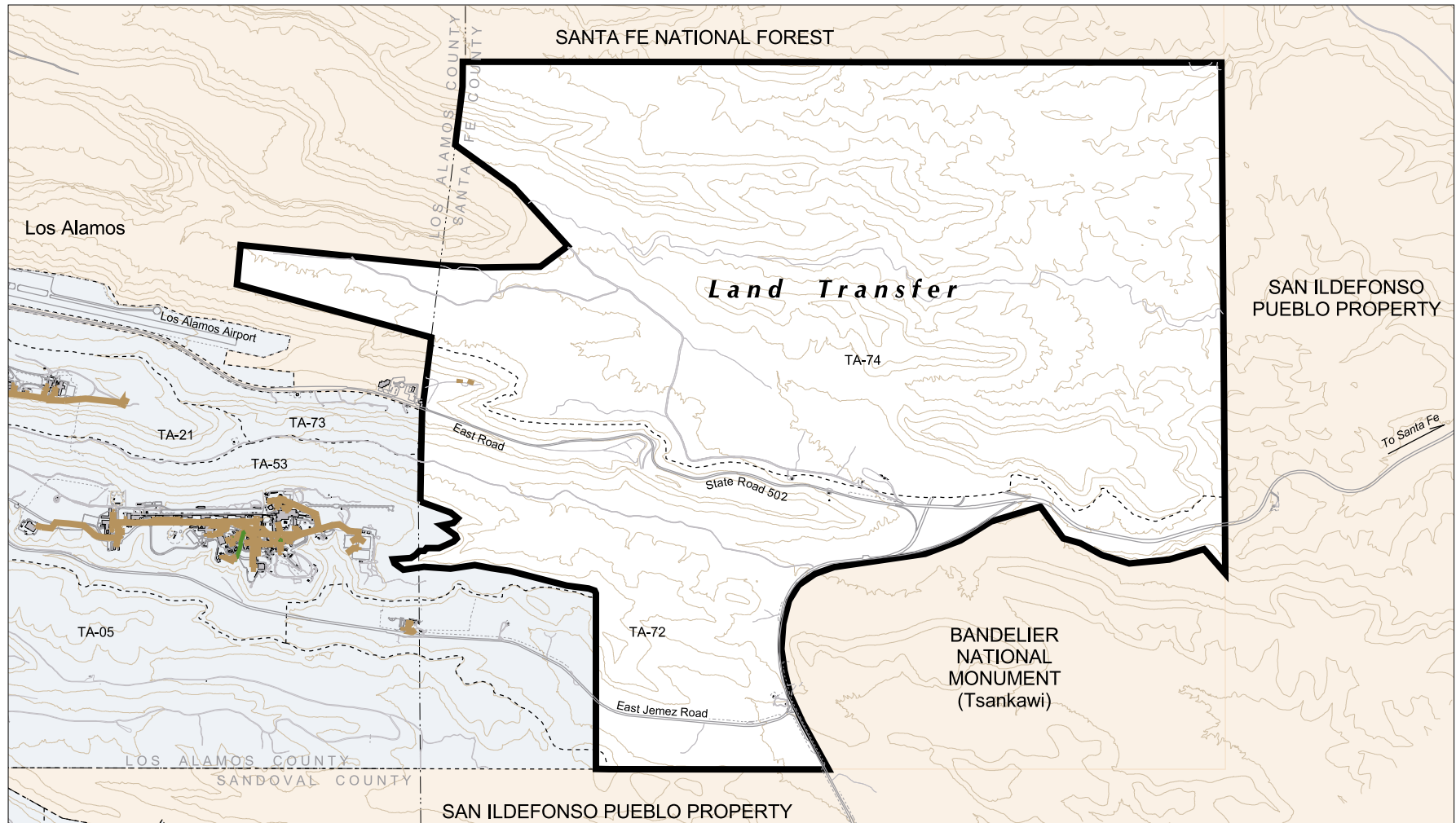


LEGEND










-  Water Distribution Lines
-  Water Service Lines
-  Water Transmission Lines
-  Planning Area
-  Dept. of Energy Property
-  LANL Buildings
-  Non Dept. of Energy Property

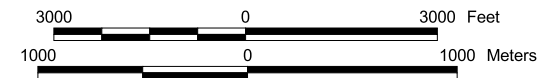


Map IV-K7: Land Transfer Natural Gas System



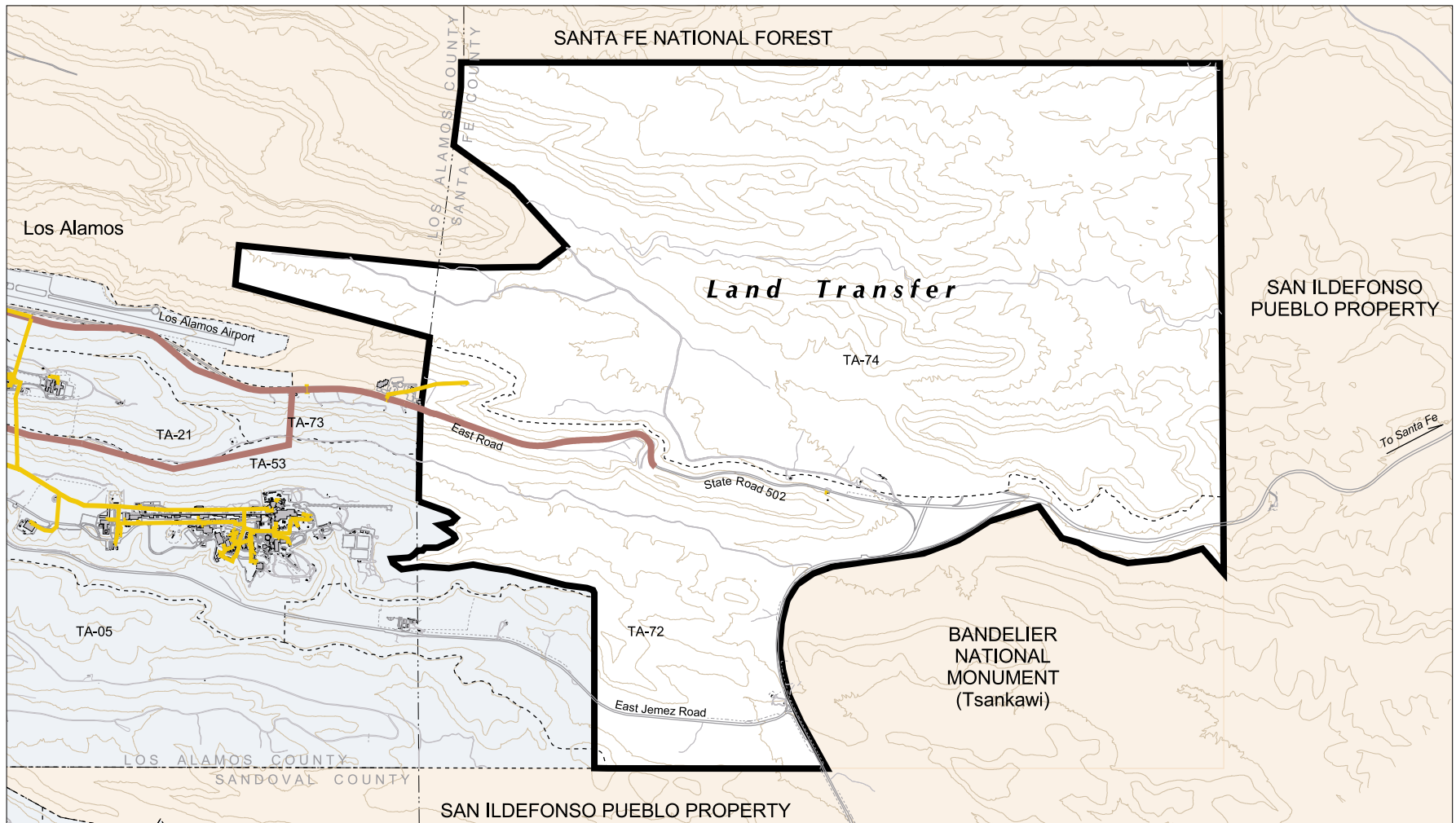
LEGEND

-  Gravity Lines
-  Effluent Lines
-  Force Main Lines
-  Drain Lines
-  Service Lines
-  Dept. of Energy Property
-  LANL Buildings
-  Non Dept. of Energy Property
-  Planning Area



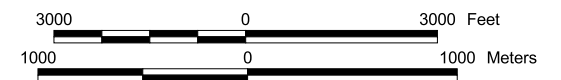


Map IV-K8: Land Transfer Area Sanitary Sewer System



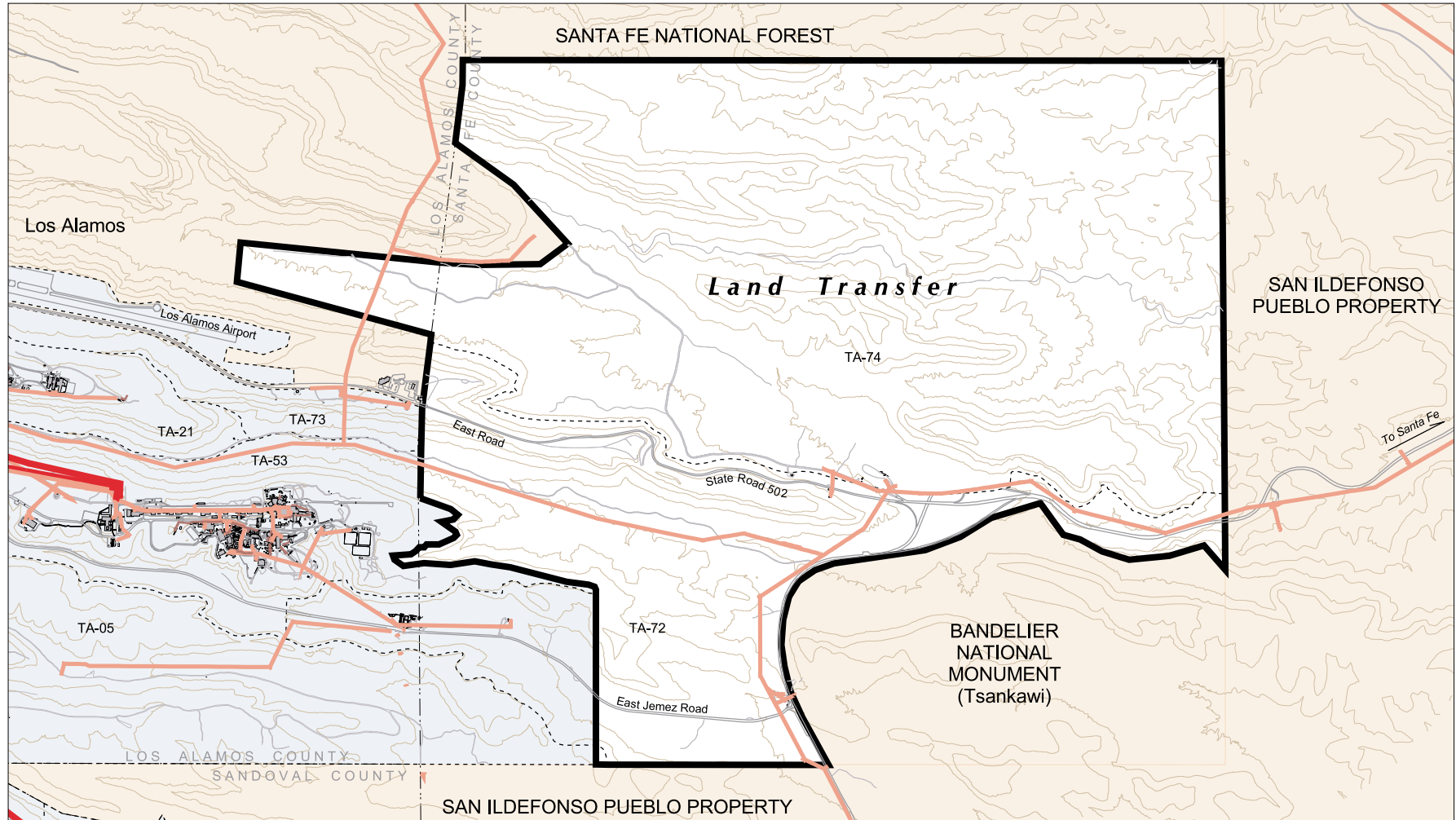
LEGEND

- Natural Gas Distribution
- Natural Gas Transmission
- Planning Area
- Dept. of Energy Property
- LANL Buildings
- Non Dept. of Energy Property






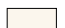




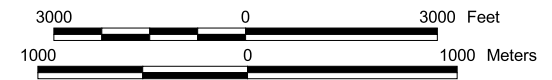


Map IV-K9: Land Transfer Area Existing Electrical System



LEGEND

- |                                                                                                                       |                                                                                                                  |
|-----------------------------------------------------------------------------------------------------------------------|------------------------------------------------------------------------------------------------------------------|
|  Proposed 155 kv Transmission Line |  Dept. of Energy Property     |
|  Electrical Transmission           |  LANL Buildings               |
|  Electrical Distribution           |  Non Dept. of Energy Property |
|  Electrical Service                |  Planning Area                |

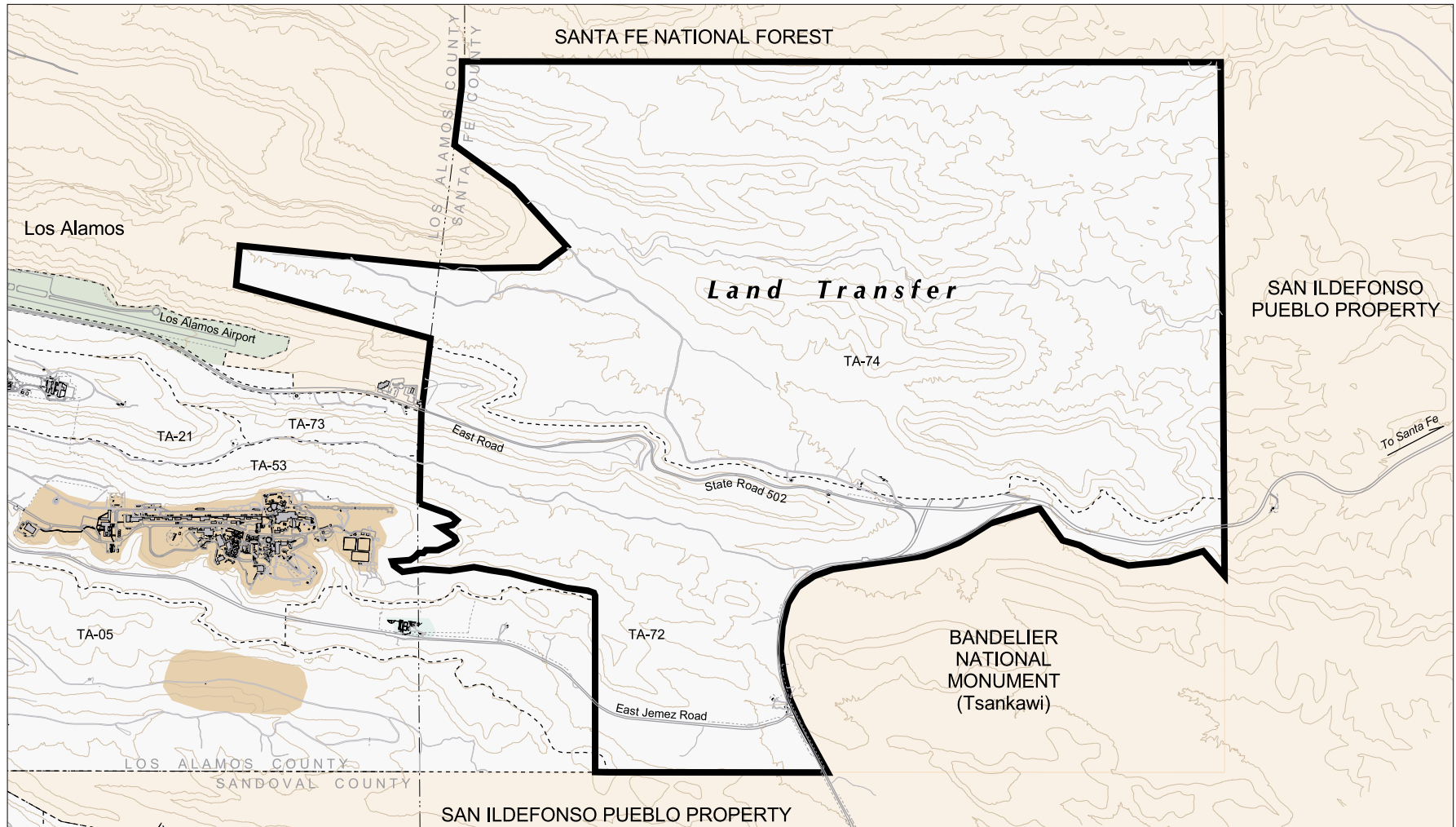


**5. *Facilities***

**6. *Environment, Safety and Health***

## 7. *Quality Environment*

Map IV-K10: Land Transfer Future Land Use



LEGEND

- |                              |                            |                                   |
|------------------------------|----------------------------|-----------------------------------|
| LANL Buildings               | Experimental Science       | Reserve                           |
| Non Dept. of Energy Property | High Explosive R&D         | Theoretical/Computational Science |
| Planning Area                | High Explosive Testing     | Waste Management                  |
| Research Park                | Nuclear Materials R&D      |                                   |
| Administration               | Physical/Technical Support |                                   |
| Airfield                     | Public/Corporate Interface |                                   |

